

**PATLITE®**

# Signaling & Lighting for the Food & Beverage Industry



MEET SANITATION  
AND HYGENIC  
STANDARDS

---

Withstand Dust, Water  
and High-pressure Steam

---

Maintain Reliable, Sanitary  
Industrial Operations

---

# Signaling Solutions with Hygienic and Sanitary Design

Ensure that your visual status and indicators can withstand dust, water and high-pressure steam for harsh and demanding environments with signaling devices that have the appropriate IP rating for your specific application.



## Outdoor Rated Signal Tower

LR10

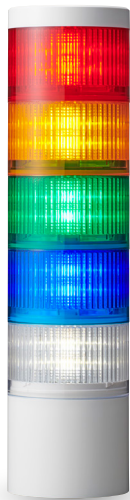
Modular LED sections and buzzer for easy configuration.

Great for outdoor use and in other harsh environments including high-pressure and high-temperature washdown.

Multiple light patterns for more visible alerts in larger facilities or outdoor use.

### Features

- 1 to 5 single color tiers
- 100mm diameter
- 24V DC
- 92dB buzzer module
- IP69K
- Lighting Patterns: Continuous, Flashing, Triple flash, Rotation, Dimming
- Direct, surface mount
- 12-pin M12 connection



IP69K

## Modular Signal Tower

LR6+FB295

Modular "Twist and Lock" LED sections and buzzer for easy configuration.

Ideal for environments requiring high-pressure and high-temperature washdown.

### Features

- 1 to 5 single color tiers
- 60mm diameter
- 24V DC
- 88dB buzzer module
- IP67 / IP69K
- Lighting Patterns: Continuous, Flashing
- Direct or 30mm nut surface mount, 1/2" NPT pole mount
- 12-pin M12 connection



IP69K

IP67



## Wash Down Equipment with Confidence



IP69K

### Enclosed Signal Tower

LS7-9

Features a smooth surface to reduce debris accumulation.

Ideal for high-pressure, high-temperature washdown.

#### Features

- 3 or 5 single color tiers (RYG or RYGB)
- 70mm diameter
- 24V DC
- 85dB buzzer option
- IP69K
- Lighting Patterns: Continuous, Flashing (no flashing with M12 connection)
- 1/2" NPT pole mount
- Lead wires or 8-pin M12 connection

### Compact, Multi-color Beacon

NE+FB295

7-in-1 Colors with options for buzzer and capacitive touch sensor which can be used with a gloved hand.

Use the touch sensor as a call or confirmation button.

Space saving, compact design with multiple color indicators, ideal for high-pressure, high-temperature washdown.



IP69K

IP67

#### Features

- Multi-colored beacon
- 56mm diameter
- 12~24V DC
- IP67 / IP69K
- Lighting Patterns: Continuous, Flashing
- 30mm nut surface mount
- 5-pin M12 connection



## Robust Warning Lights

Excellent for use on machines that don't require high-pressure or high-temperature washdown but still in need of a different protective IP rating.



IP66

### Flashing Beacon

SL08-KT / SF08-KT

Simple beacon with various light patterns, also available with or without a buzzer.

Designed with a fresnel lens distributing ambient, uniform light with 69cd light-emitting surface.

#### Features

- Select from 4 colors
- 80mm diameter
- 12~24V DC or 100~240V AC
- 86dB buzzer option
- IP66
- Lighting Patterns: Continuous, Blinking, Triple flash (SL)  
22 light patterns (SF)
- Direct, surface mount
- Terminal block

IP68

### Slim, Flashing Warning Light

LPT

Dust-proof and water-proof IP68 rated flashing light lasting up to 100,000 hours.

Connect multiple units to flash simultaneously or in an alternating pattern.

#### Features

- Select from 4 colors
- 86mm or 114mm wide units
- 12~24V DC
- IP68
- Lighting Patterns: Continuous, Blinking, Triple flash, Extreme warning flash, Brightness reduction mode
- Direct, surface mount
- Daisy-chain up to 20 units

# Inspection and Equipment Lighting

Rugged, industrial-grade LED lighting designed for a variety of applications, offering multiple IP ratings for bright, focused, or task-oriented illumination.



IP69K IP66 IP67

## Compact and Durable LED Worklight

CLA-A

### Features

- 100mm ~ 1,200mm length options
- Industrial grade polycarbonate resin housing
- 24V DC
- IP66 / IP67 / IP69K
- Snap in or magnetic mounting



IP69K IP66G IP67G

## Rugged Design LED Spotlight

CLN

### Features

- 85mm square
- Stainless Steel casing
- Tempered glass lens
- 24V DC
- IP66G / IP67G / IP69K
- Pan or Pan and Tilt options
- M12 Daisy link type also available



IP69K IP66G IP67G

## Rugged Design LED Worklight

CLK

### Features

- 200mm ~ 600mm length options
- Stainless Steel or Aluminum casing
- Tempered glass or Acrylic lens options
- 24V DC
- IP66G / IP67G / IP69K
- Standard mounting or Swivel bracket mounting
- Cable or M12 connection
- M12 Dais link type also available

# Industrial, Rugged Horn / Annunciator

## Pre-recorded or MP3 Programmable Sounder

EHS / EHV

### Features

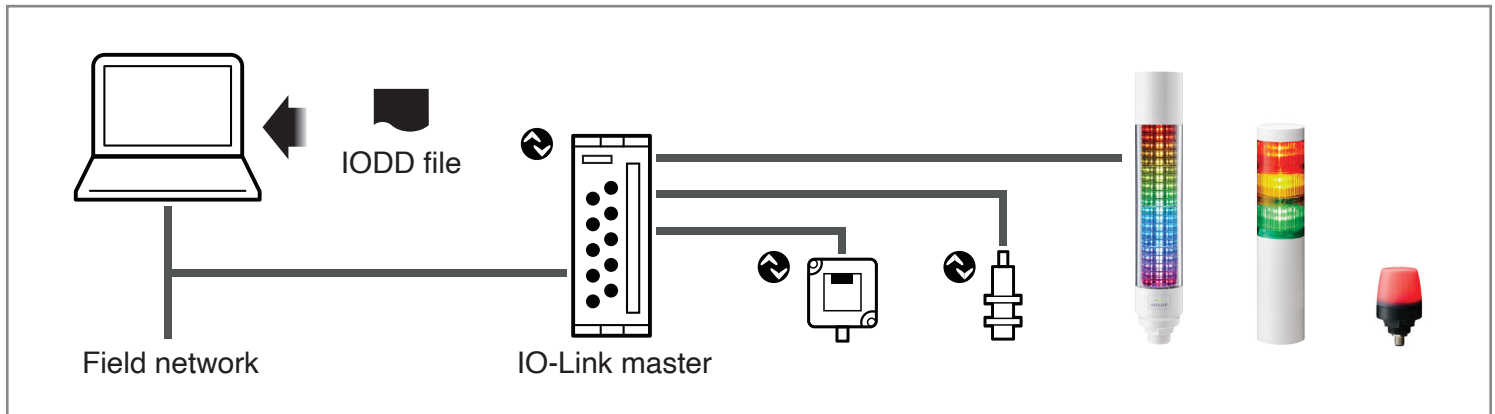
- 63 pre-programmed sounds and MP3 option with 220 seconds of recording
- Adjustable volume up to 110dB (105dB for voice)
- 12~24V DC or 100~240V AC
- IP65
- High vibration resistance of 4.5G



IP65

# Standardized IO-Link Signaling Devices

The LR6-IL and LB6-IL Signal Towers, and the NE-IL Signal Beacons can be connected to IO-Link with a single M12 cable. This minimizes wiring requirements, which reduces labor and costs. IO-Link allows for easy replacement of old or damaged devices, as it automatically imports previous settings to the new device.



IP65

## Multi-segment IO-Link Tower

LB6-IL

20 segment stack light with 21 different colors

3 operating modes to support simple signal tower mode, level meter mode, and animation mode.

### Features

- 1 to 5 single color tiers
- 100mm diameter
- 24V DC
- 88dB buzzer module
- IP65
- 10 Lighting Patterns
- 30mm nut surface mount, 1/2" NPT pole mount
- 12-pin M12 connection



IP65

## Modular IO-Link Signal Tower

LR6-IL

Modular "Twist and Lock" LED sections and buzzer for easy configuration.

### Features

- 1 to 5 single color tiers
- 60mm diameter
- 24V DC
- 88dB buzzer module
- IP65
- Lighting Patterns: Continuous, Flashing
- Direct or 30mm nut surface mount, 1/2" NPT pole mount
- 5-pin M12 connection



IP65

## Multi-color IO-Link Beacon

NE-IL

7-in-1 Colors with options for buzzer and capacitive touch sensor which can be used as a call or confirmation button.

Space saving, compact design with multiple color indicators.

### Features

- Multi-colored beacon
- 56mm diameter
- 24V DC
- 88dB buzzer module
- IP65
- Lighting Patterns: Continuous, Flashing
- 30mm nut surface mount
- 5 or 8-pin M12 connection

# Level and Temperature Monitoring

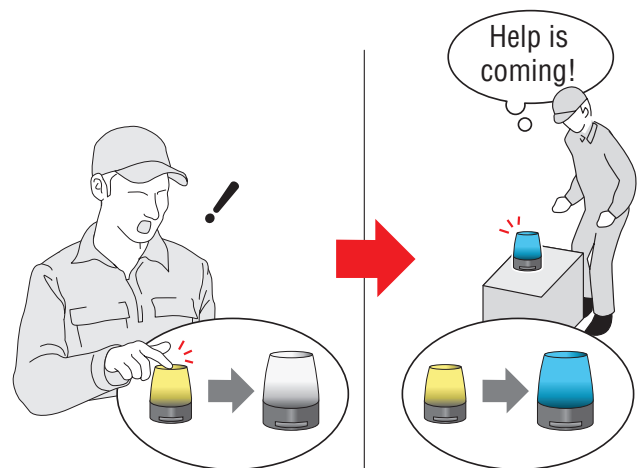
Visualization of tank level and temperature information can be achieved with preset lighting patterns. The patterns can be activated depending on the tank level. Using the level meter mode on the LB6-IL Signal Tower, easily display material replenishment timing and machine status changes.



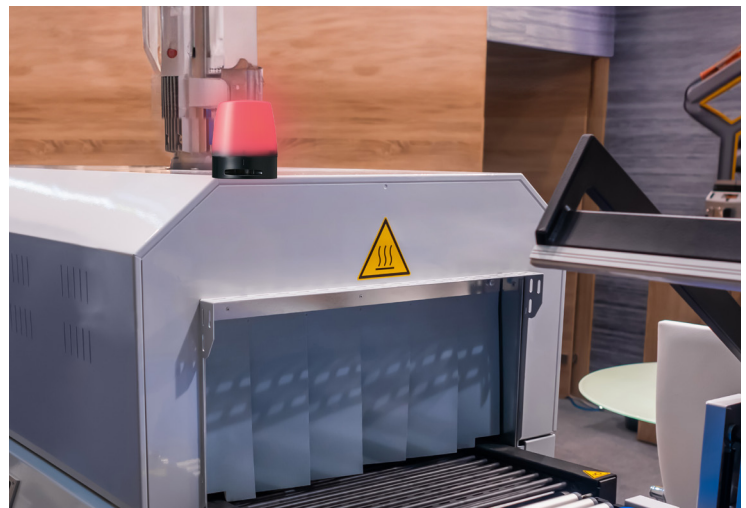
# 2-way Notification System with NE-IL with Touch Feature

When an issue arises, the personnel at the production site touches the NE-IL to activate the visual and audible alarms of the NE-IL at the manager's site.

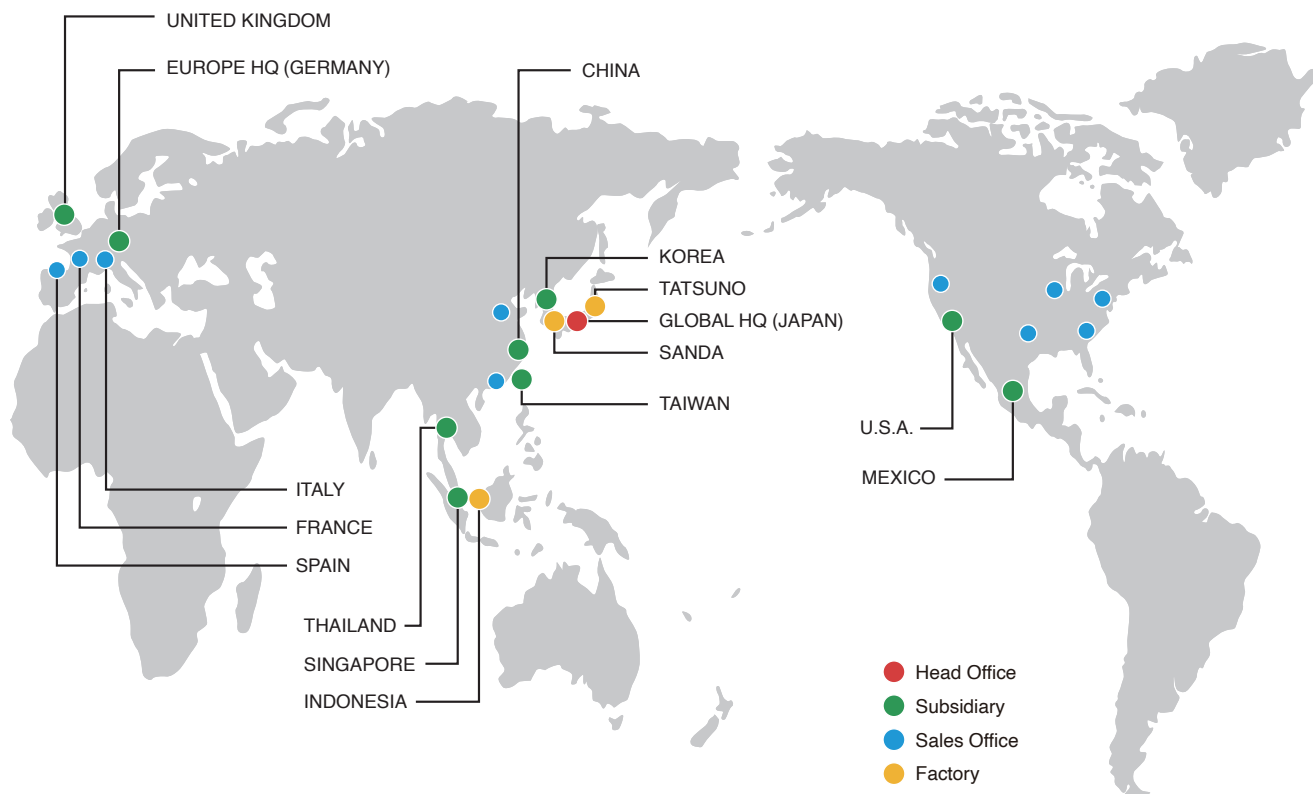
The manager instantly notices the alarms and determines where and what the issue is according to the illuminated color. The manager can touch the NE-IL to send notification back to the production site to indicate that help is on the way.



\*NE-IL with touch sensor



# PATLITE® Global Network



## PATLITE Corporation

[www.patlite.com](http://www.patlite.com)

**PATLITE (U.S.A.) Corporation**

**PATLITE MEXICO S.A. de C.V.**

**PATLITE Europe GmbH**

**PATLITE UK LTD**

**PATLITE (CHINA) Corporation**

**PATLITE KOREA CO., LTD.**

**PATLITE TAIWAN CO., LTD.**

**PATLITE (THAILAND) CO., LTD.**

**PATLITE (SINGAPORE) PTE LTD**

**PT. PATLITE INDONESIA**

- PATLITE, the PATLITE logo are either registered trademarks or trademarks of PATLITE Corporation in JAPAN and/or other countries.
- MPEG Layer-3 audio coding technology licensed from Fraunhofer IIS and Thomson Licensing.
- The names of other companies and products are trademarks or registered trademarks of their respective companies.

### ⚠ CAUTION

To ensure correct use of these products, read the "Instruction Manual" prior to use. Failure to follow all safeguards can result in fire, electric shock, or other accidents. Specifications are subject to change without notice.