

**PATLITE®**

# IO-Link Product Catalog



**STANDARDIZE  
TO SIMPLIFY**

---

Reduce Wiring, Setup  
Time and Cost

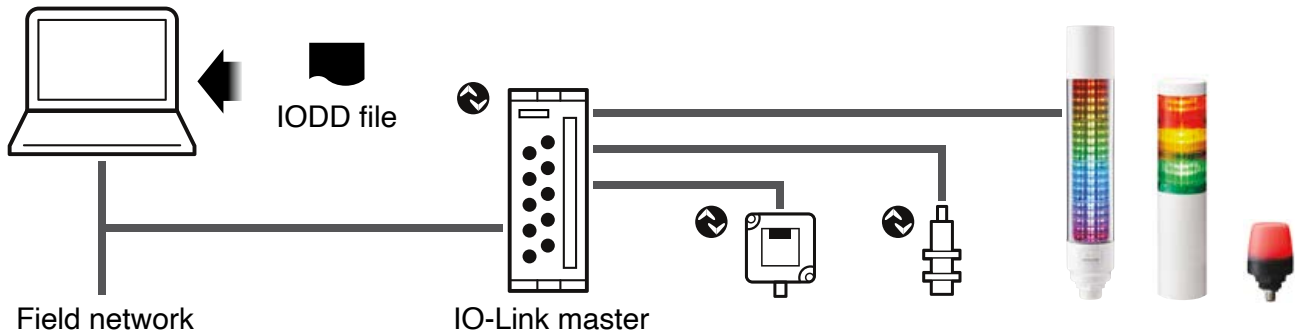
---

Integrate Non-compatible  
Devices to IO-Link

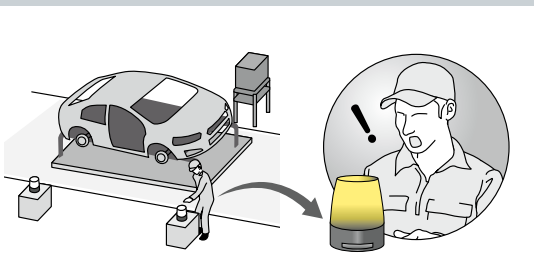
---

# Standardized IO-Link Signaling Devices

The LR6-IL and LB6-IL Signal Towers, and the NE-IL Signal Beacons can be connected to the IO-Link system with a single M12 cable. This minimizes wiring requirements, which reduces labor and costs. IO-Link allows for easy replacement of old or damaged devices, as it automatically imports previous settings to the new device.



## Automotive Production Line



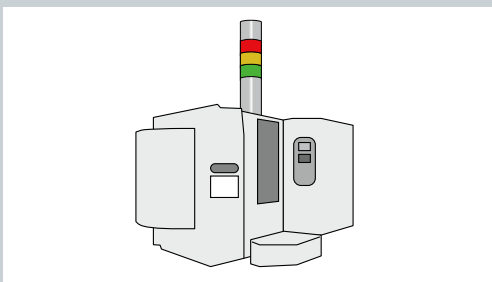
Call for parts and notify managers of issues.

## Food and Beverage Production Line



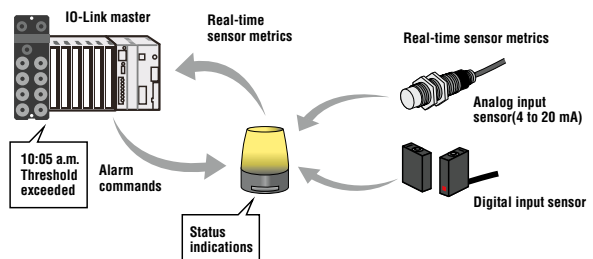
Acquire real-time equipment status and collect operational metrics.

## Various Industrial Equipment



Reduce wiring costs and device setup time.

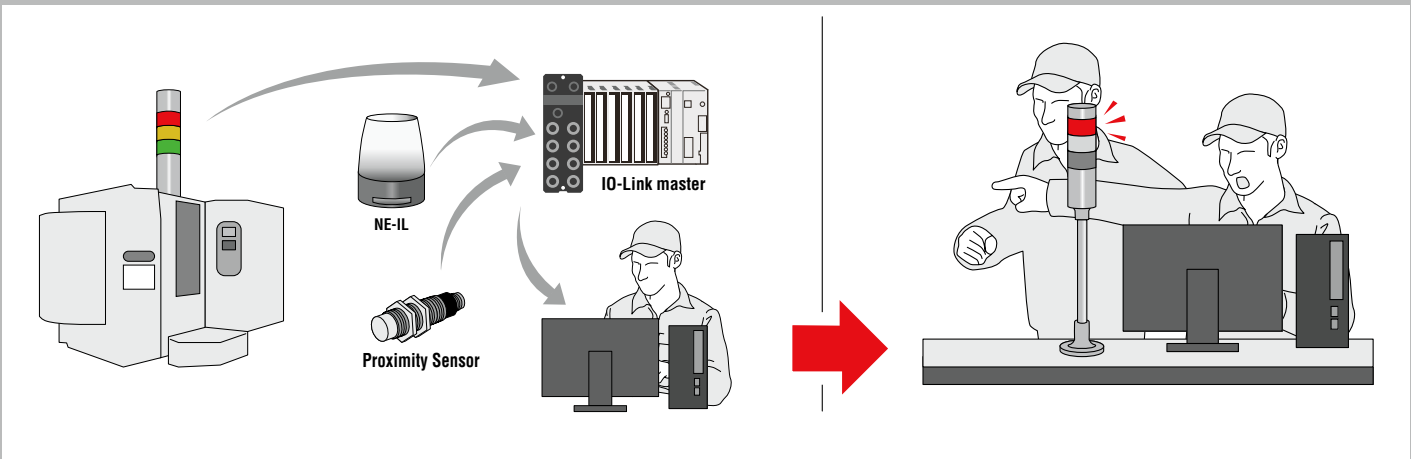
## Devices Not Compatible with IO-Link



Enables integration of non-compatible devices into IO-Link.

# Enhance Predictive Maintenance

The IO-Link master acquires real-time operational data of the sensors and other devices that are connected to the system. This data can be monitored remotely, and can also be collected for further analysis.



By detecting anomalies such as water or dust obstruction, the IO-Link master can prompt the LR6-IL Signal Tower to activate its visual and audible alarms to alert personnel. This preemptive alert system helps identify potential device issues before they cause equipment malfunctions or disrupt production.



IP65

## Modular IO-Link Signal Tower

LR6-IL

Modular "Twist and Lock" LED sections and buzzer for easy configuration.

### Features

- 1 to 5 single color tiers
- 60mm diameter
- 24V DC
- 88dB buzzer module
- IP65

- Lighting Patterns:  
Continuous, Flashing
- Direct or 30mm nut surface  
mount, 1/2" NPT pole mount
- 5-pin M12 connection

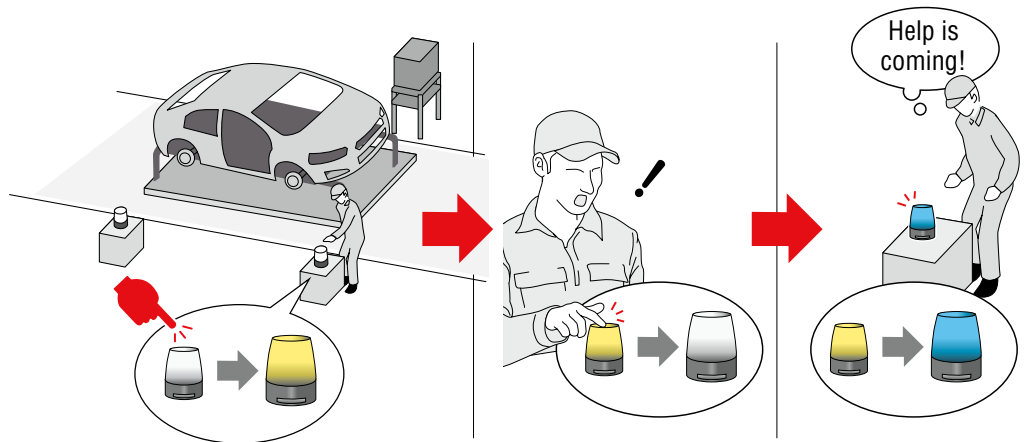




## 2-way Notification System with NE-IL with Touch Feature

When an issue arises, personnel at the production site touch the NE-IL to activate the visual and audible alarms of the NE-IL at the manager's site.

The manager instantly notices the alarms and determines where and what the issue is according to the illuminated color. The manager can touch the NE-IL to send notification back to the production site to indicate that help is on the way.



\*NE-IL with touch sensor

### Multi-color IO-Link Beacon

NE-IL

7-in-1 Colors with options for buzzer and capacitive touch sensor which can be used as a call or confirmation button.

Space saving, compact design with multiple color indicators.

#### Features

- Multi-colored beacon
- 56mm diameter
- 24V DC
- 88dB buzzer module
- IP65

- Lighting Patterns:  
Continuous, Flashing
- 30mm nut surface mount
- 5-pin M12 connection
- Touch sensor option

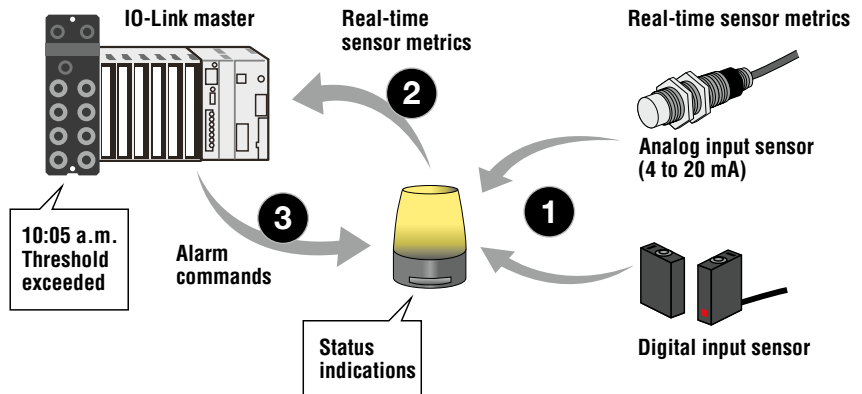


IP65

# Make Devices Compatible with IO-Link

## Connect via the NE-ILXB

For devices that are not compatible with IO-Link, the digital / analog inputs on the NE-ILXB-M beacon can be used as an IO-Link hub. Real-time sensor metrics are sent to the beacon(1), which sends this data to the master(2). The master can then send specific commands to activate the beacon alarms(3).



## Multi-color IO-Link Beacon with Digital/Analog Input

NE-ILXB

7-in-1 Colors with options for buzzer and capacitive touch sensor which can be used as a call or confirmation button.

Space saving, compact design with multiple color indicators.

### Features

- Multi-colored beacon
- 56mm diameter
- 24V DC
- 88dB buzzer module
- IP65
- Lighting Patterns:
  - Continuous, Flashing
- 30mm nut surface mount
- 8-pin M12 connection
- Touch sensor
- Digital/Analog inputs





# Level and Temperature Monitoring

Visualization of tank level and temperature information can be achieved with preset lighting patterns. The patterns can be activated depending on the tank level. Using the level meter mode on the LB6-IL Signal Tower, easily display material replenishment timing and machine status changes.



# Process and Takt Time

Maintain a smooth workflow across assembly lines with color-coded timers that clearly show elapsed time or time remaining with the animation mode.



IP65

## Multi-segment IO-Link Tower

LB6-IL

20 segment stack light with 21 different colors

3 operating modes to support simple signal tower mode, level meter mode, and animation mode.

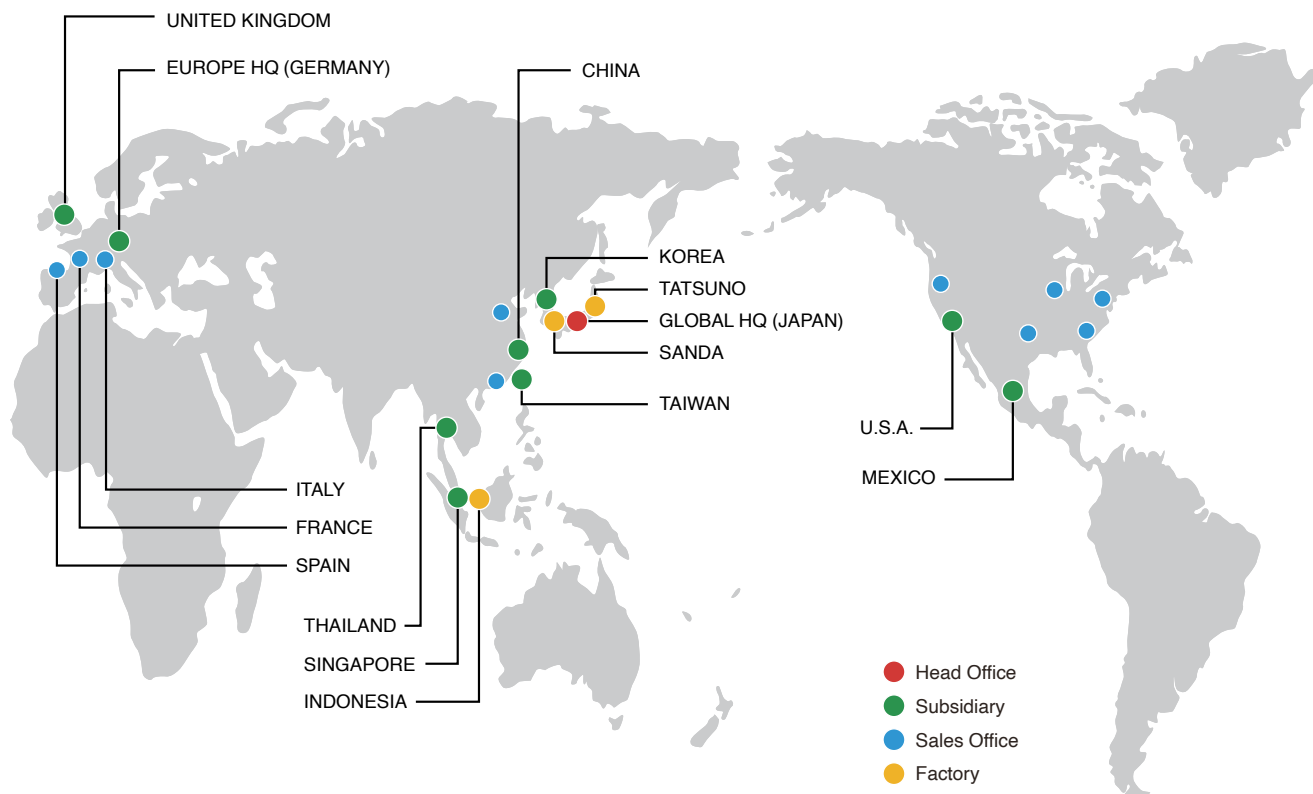
### Features

- 1 to 5 single color tiers
- 100mm diameter
- 24V DC
- 88dB buzzer module
- IP65
- 10 Lighting Patterns
- 30mm nut surface mount, 1/2" NPT pole mount
- 12-pin M12 connection

## Specifications

				
Brief Description	IO-Link Signal Tower	IO-Link Signal Beacon	IO-Link Signal Beacon with Digital/Analog Input	IO-Link Signal Tower
Series	LR6-IL	NE-IL	NE-ILXB	LB6-IL
Voltage / Power	24V DC	24V DC	24V DC	24V DC
Size (mm)	ø60mm	ø56mm	ø56mm	ø60mm
Conformity Standards	CE / RoHS / UL / FCC / KC	CE / RoHS / UL / FCC / KC	CE / RoHS / UL / FCC / KC	CE / RoHS / UL / FCC
IP/NEMA	IP65 / NEMA TYPE 4X, 13	IP65 / NEMA TYPE 4X, 13	IP65 / NEMA TYPE 4X, 13	IP65
Mounting Location	Indoor	Indoor	Indoor	Indoor
Mounting Direction	Upright	Upright	Upright	Upright
Ambient Temperature	-20°C ~ +50°C	-20°C ~ +60°C	-20°C ~ +60°C	-20°C ~ +50°C
Communication Interface	IO-Link	IO-Link	IO-Link	IO-Link
Connection	M12 Connector 5-pin	M12 Connector 5-pin	M12 Connector 8-pin	M12 Connector 5-pin
Luminous Color	Red, Amber, Green, Blue, White, and Multi-color (7 colors)	Red, Amber, Green, Blue, Cyan, Purple, White	Red, Amber, Green, Blue, Cyan, Purple, White	Multi-color (21 colors)
Light Pattern	Continuous on / Blinking	Continuous on / Blinking / Pulse	Continuous on / Blinking / Pulse	Continuous on / Blinking / Flashing / Pulsing
Modularity of LED Unit	Up to 5 Tiers	–	–	–
Flashes per Minute	60	Determined by programming	Determined by programming	30 / 90 / 120 Flashes Per Minute
Sound Pressure (dB)	84	88	88	88
Number of Alarm Sounds	4	8	8	9
Number of Inputs	–	–	1 Digital / 1 Analog	–
Number of Outputs	–	–	–	–
Remarks	–	Touch sensor	Touch sensor	–

# PATLITE® Global Network



## PATLITE Corporation

[www.patlite.com](http://www.patlite.com)

**PATLITE (U.S.A.) Corporation**

**PATLITE MEXICO S.A. de C.V.**

**PATLITE Europe GmbH**

**PATLITE UK LTD**

**PATLITE (CHINA) Corporation**

**PATLITE KOREA CO., LTD.**

**PATLITE TAIWAN CO., LTD.**

**PATLITE (THAILAND) CO., LTD.**

**PATLITE (SINGAPORE) PTE LTD**

**PT. PATLITE INDONESIA**

- PATLITE, the PATLITE logo are either registered trademarks or trademarks of PATLITE Corporation in JAPAN and/or other countries.
- MPEG Layer-3 audio coding technology licensed from Fraunhofer IIS and Thomson Licensing.
- The names of other companies and products are trademarks or registered trademarks of their respective companies.

### CAUTION

To ensure correct use of these products, read the "Instruction Manual" prior to use. Failure to follow all safeguards can result in fire, electric shock, or other accidents. Specifications are subject to change without notice.