

**PATLITE®**

# Signaling & Lighting for Semiconductor Industry



**CLEAR SIGNALS  
WITH EASY  
CONNECTIVITY**

---

Bright, Visual Status  
Signaling

---

Field Customizable  
Colors and Modules

---

PoE, LAN, and  
USB Connections

---

# Signaling Solutions with Easy Integration

Easily integrate high-quality visual signaling devices into your facility's network system using USB, LAN, or PoE connections. These products not only blend with your existing system but also surpass the capabilities of standard tower lights. Offering an expanded range of colors and dynamic light patterns, they enable the display of complex signals.



## LAN-controlled Signal Tower

WE-LAN

Network programmable 9-in-1 colors for complex, yet clear visual signals.

Great for showing process with chase light pattern.

Superior flexibility with adjustable brightness and soft light patterns to help with eye strain.

### Features

- 4 multi-colored tiers
- 37.5mm profile
- 24V DC
- 88dB buzzer
- IP23
- Lighting Patterns: Continuous, Flashing, Single flash, Double flash, Triple flash, Pulsing, Right chase light, Left chase light
- Direct, surface mount
- RJ-45 terminal connection
- HTTP, Modbus/TCP and SOCKET



## USB-controlled Beacon

NE-USB

7-in-1 Colors with options for buzzer and capacitive touch sensor which can be used as a call or confirmation button.

Space saving, compact design with multiple color indicators.

### Features

- Multi-colored beacon
- 56mm diameter
- 5V DC
- 85dB or 65dB Buzzer
- IP65 or IP20
- Lighting Patterns: Continuous, Flashing, Blinking, Pulsing
- 2-point hole mount or Magnet with 1/4-20 threads
- USB-C connection
- Compatible with Windows, Linux, and Mac
- Capacitive touch sensor option



## PoE Enabled Signal Tower

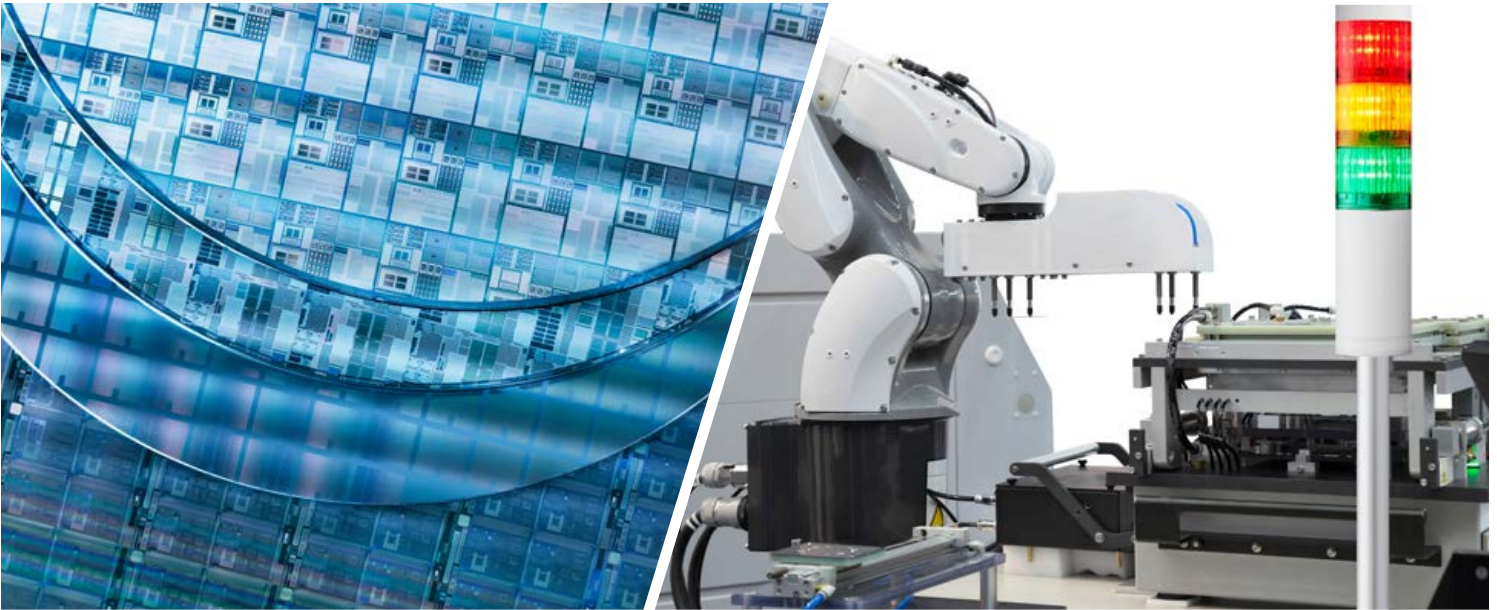
LA6-POE

Easy single cable installation and field programmable 21-in-1 colors.

Indicate temperature and monitor tank or equipment levels to prevent product damage

### Features

- 5 multi-colored tiers
- 60mm diameter
- 24V DC
- 85dB buzzer
- IP54
- Programmable lights and sound
- 3 Operating Smart Modes: Time Trigger mode, Pulse Trigger mode, Single-display mode
- Direct mount or Desktop type
- PoE connection
- HTTP, Modbus TCP/IP
- Mirroring function for remote monitoring
- Built-in terminal for alternative installation



## Customizable Signal Tower for Machine Indication

Enhance the safety, efficiency, and smooth operation of manufacturing processes with our customizable tower lights. These lights are designed for easy on-site modifications, allowing you to simply add or remove LED and buzzer modules using a convenient twist-and-lock system, catering to the unique needs of any machine. Available in diameters ranging from 40mm to 100mm, and offering versatile mounting options such as direct mount, L-bracket mount, and folding bracket mount, our stack lights can be tailored to precisely match your specific machine requirements.



### 40mm Modular Signal Tower

---

LR4 Series

#### Features

- 1 to 5 single color tiers
- 40mm diameter
- 24V DC or 100-240V AC
- IP20 to IP65
- LED modules available in color or clear lenses
- Various mounting options



### 60mm Modular Signal Tower

---

LR6 Series

#### Features

- 1 to 5 single color tiers or 1 multi-color tier
- 60mm diameter
- 24V DC or 100-240V AC
- IP20 to IP69K
- LED modules available in color or clear lenses
- Multi-color LED available
- Various mounting options





## Flush-mount Lights for Process Monitoring

Flush-mounted signal lights on the machines provide a seamless and easily discernible way to check statuses at a glance. The LED segments are distinctly separated, offering a straightforward display of color-coded indicators for normal operation, standby mode, maintenance requirements, or any faults or errors.

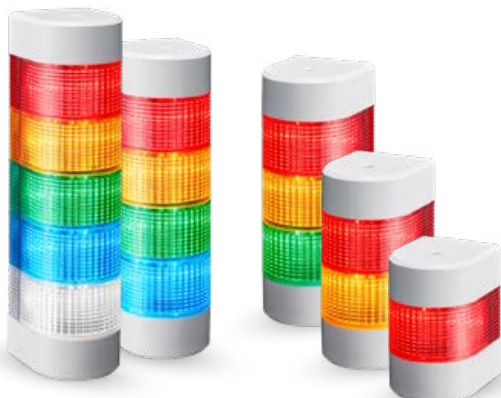


### **Low-profile Signal Tower**

WE (Chrome) / WEP (Off-white)

#### Features

- 3 to 5 single color tiers
- 73.5mm profile
- 24V AC/DC
- 90db Buzzer
- IP54
- With or without Buzzer/Flashing
- Flush surface mount

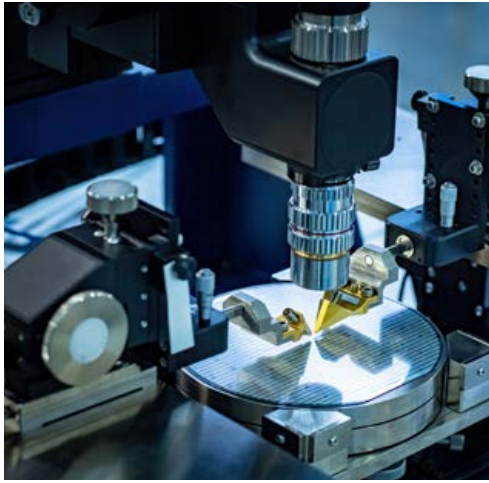


### **Wall-mount Signal Tower**

WME-D

#### Features

- 1 to 5 single color tiers
- 80mm profile
- 24V DC
- 93dB Buzzer
- IP54
- With or without Buzzer/Flashing
- Flush surface mount
- Interchangable LED modules



## Compact Signal Beacons For Smaller Spaces

Simple, solid color indicator lights can integrate onto machines or within compact workstations. Their purpose is to promptly alert both operators and maintenance personnel to any issues, facilitating swift responses to address and resolve problems, thereby minimizing downtime.



### Mono-color Compact Beacons

NE-24A-R / Y / G / B / C

#### Features

- Single color beacons (5 color options)
- 56mm diameter
- 24V DC
- IP65
- Continuous light



### Multi-color Compact Beacons

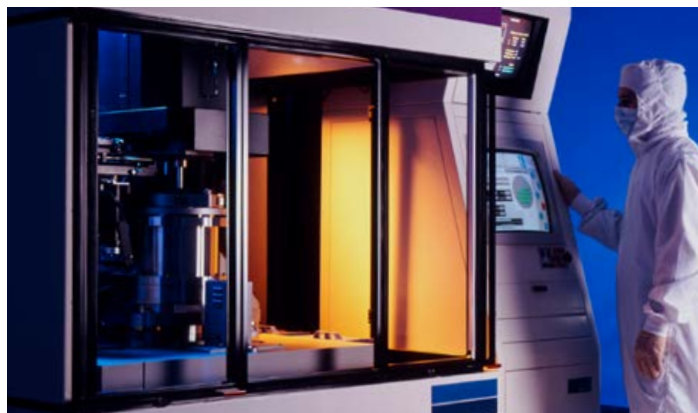
NE-M1A-M

#### Features

- 7-in-1 Colors: Red / Amber / Green / Blue / Cyan / Purple / White
- 56mm diameter
- 12-24V DC
- IP65, IP67, or IP69K
- With or without Buzzer
- With or without Capacitive Touch
- M12 Connector option available

## Lighting for Photosensitive Material Processing

Amber illumination with longer wavelength are used to avoid causing unwanted reactions in photosensitive materials. Use a controlled lighting environment and minimize the risk of unintended exposure to brighter lights harmful during photolithography processes.



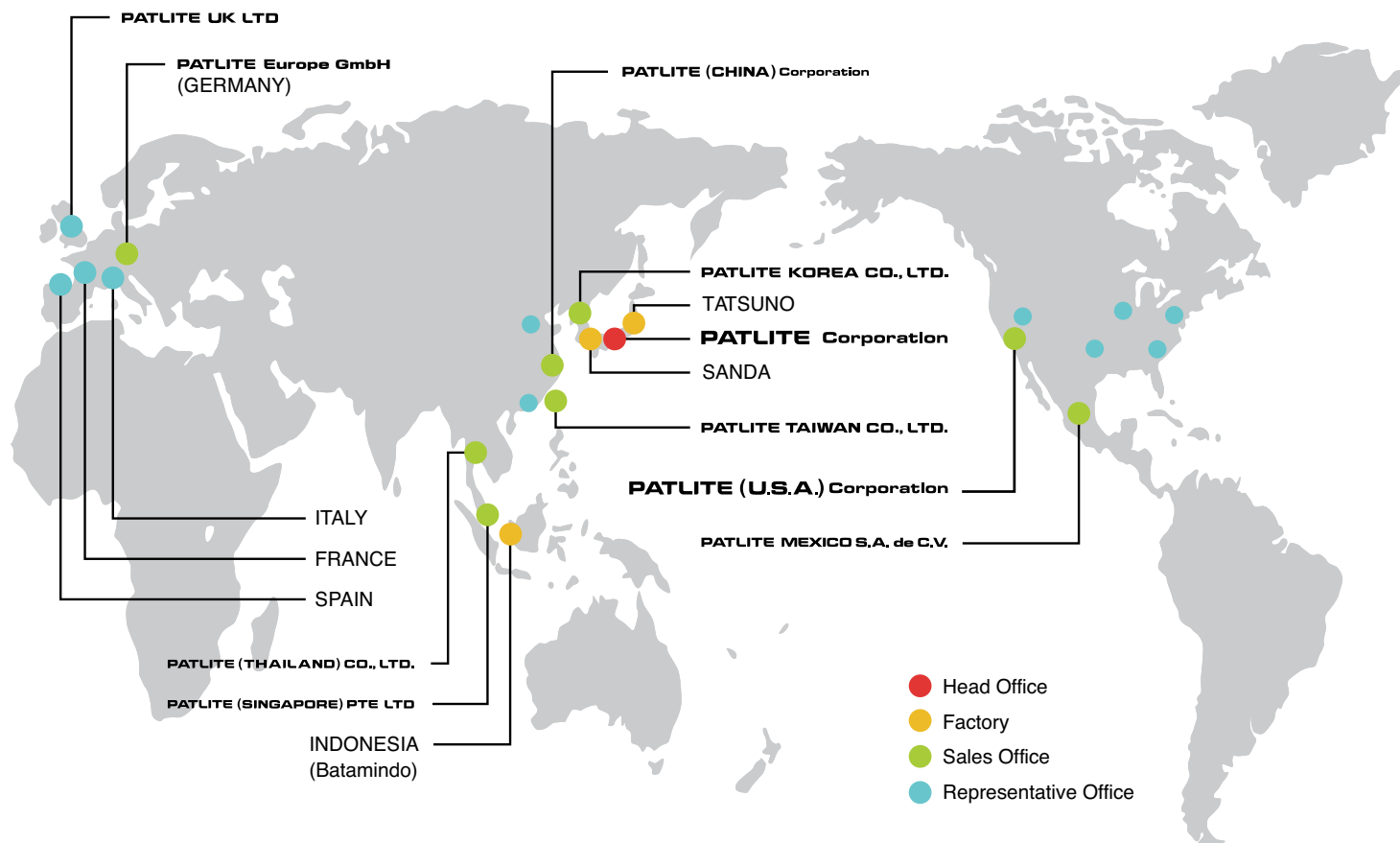
### Amber LED Worklight

CLA3S-24A-Y

#### Features

- 300mm length
- Industrial grade polycarbonate resin housing
- 24V DC
- IP66/67/69K
- Snap in or magnetic mounting
- 500mm cable
- Wavelength 590nm

# PATLITE® Global Network



## PATLITE Corporation

[www.patlite.com](http://www.patlite.com)

**PATLITE (U.S.A.) Corporation**

**PATLITE MEXICO S.A. de C.V.**

**PATLITE Europe GmbH**

**PATLITE UK LTD**

**PATLITE (CHINA) Corporation**

**PATLITE KOREA CO., LTD.**

**PATLITE TAIWAN CO., LTD.**

**PATLITE (THAILAND) CO., LTD.**

**PATLITE (SINGAPORE) PTE LTD**

**PT. PATLITE INDONESIA**

- PATLITE, the PATLITE logo are either registered trademarks or trademarks of PATLITE Corporation in JAPAN and/or other countries.
- MPEG Layer-3 audio coding technology licensed from Fraunhofer IIS and Thomson Licensing.
- The names of other companies and products are trademarks or registered trademarks of their respective companies.

### CAUTION

To ensure correct use of these products, read the "Instruction Manual" prior to use. Failure to follow all safeguards can result in fire, electric shock, or other accidents. Specifications are subject to change without notice.